

LOGICA 150

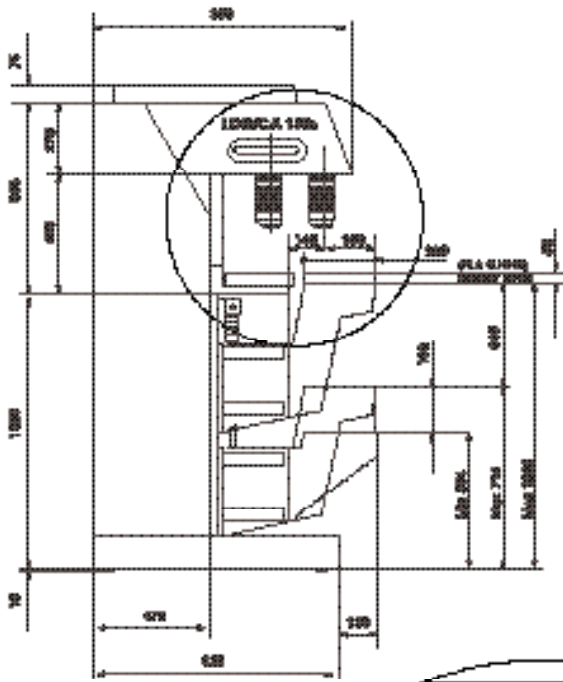


	Technical Specifications
operation	Electrical with numerical control
printing force	2200 N (150 S), 3000 N (150 SS), 2400 N (150 SSV)
Nº of colors	1-2-3-4-5
max printing speed	Adjustable up to 1450 c/h
max pad height	110 mm
AC supply	230 V single phase 50/60 Hz
average consumption	0.35 Kw/h
weight	About 310 kg
size	About 1050x700x1790 (h) mm
	Maximum Plate and Printing Size
max cliché size 1 color (open system)	150x470x10 mm
max printing area 1 color (open system)	245-450 mm
max cup diameter 1 color (closed system)	130 mm
max printing diameter 1 color (closed system)	120mm for 1-3 colors & 80mm for 4-5 colors
	Optional Accessories
cross tables	TO100, TO200, TO201, TO300
rotary tables	TRCN03, TRCN04, TRCN06, TRCN10
indexers	PS460, PR610, PRP610
oval flat conveyors	MEG9, MEG12
rectilinear tracked conveyors	MEM24, MEM32, MEM48

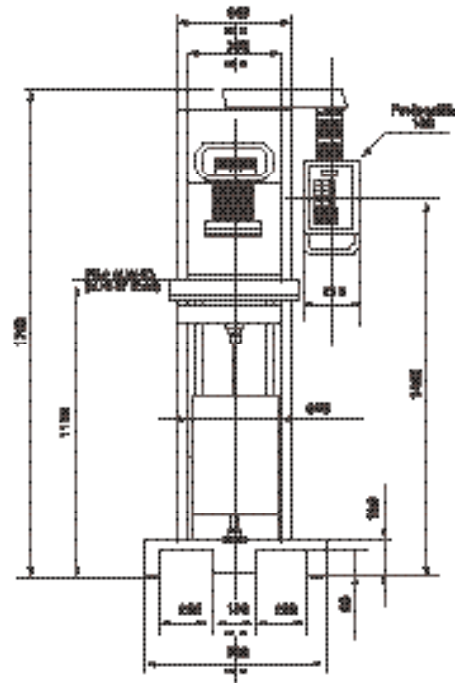


240 Smith Street • Lowell, MA 01851 (978) 459-6533 sales@padprinters.com

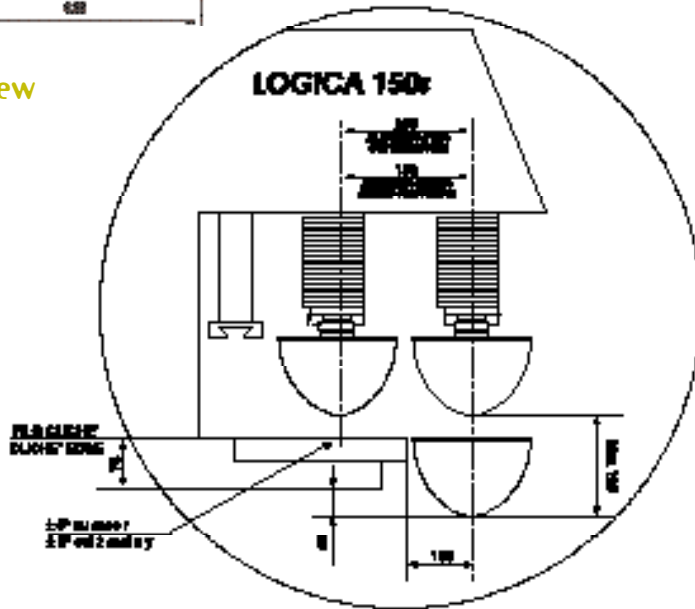
LOGICA 150



side view



front view



side view detail